

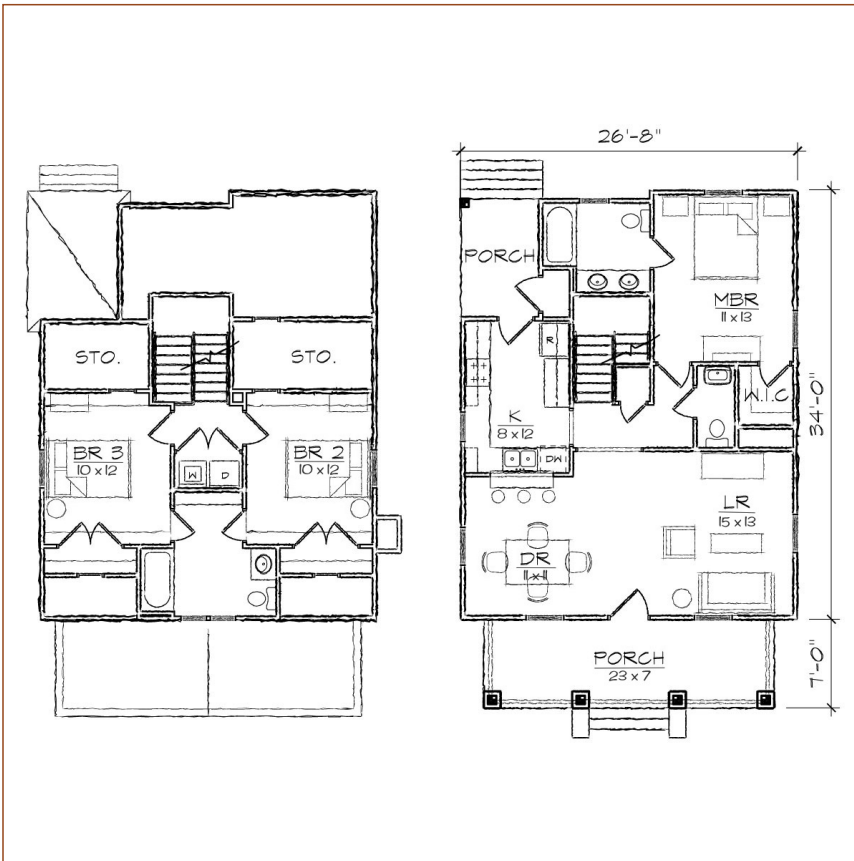
# TightLines Designs

creating great places to live



## Brookestone II

square footage. . . . .	1258 sq ft
bedrooms. . . . .	3
bathrooms. . . . .	2.5
stories. . . . .	2
width. . . . .	26' 8"
depth. . . . .	41' 0"
1st floor ceiling height. . . . .	9' 0"
2nd floor ceiling height. . . . .	8' 0"
roof pitch. . . . .	8.5/12



This one and one half story bungalow style home of 1258 square feet features a large open living and dining area, a first floor master bedroom suite, and includes a total of three bedrooms, two full bathrooms and an L-shaped galley kitchen with a breakfast bar that opens to the dining room. The second floor offers two bedrooms and a shared bathroom, the laundry area, and abundant easily accessible storage. The Arts and Crafts inspired exterior offers a side to side gabled roof and a front gabled dormer, a covered front and rear porch, and exterior storage room. At 26'-8" it is ideally suited for a narrow lot.

\*Contact us for more information on handicap, basement, garage, foundation, or framing modifications.